

THE SYMPHONY OF
BHAVISHA HOMES

PRESENTING

RAAGA



www.bhavishahomes.com



ABOUT BHAVISHA HOMES

Bhavisha Homes is committed to delivering quality homes that exceed expectations. With a track record of excellence and innovation. We create communities that enhance the lives of our residents.



WHY RAAGA

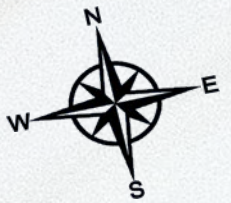
The name "Raaga" was carefully chosen because of its profound significance in the realms of art, music, and philosophy. In life, we often seek to create or inhabit spaces that resonate with our deeper values, emotions, and aspirations. The decision to name this project "Raaga" reflects a deliberate effort to imbue the living experience with a sense of harmony, nuance, and cultural richness with a twist of modern elegance.





SOPHISTICATED URBAN LIVING
EXPERIENCE LIKE NO OTHER



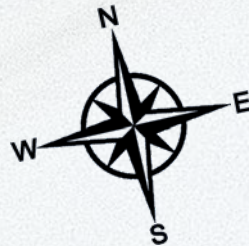


1. Mini Forest
2. Cricket Pitch
3. Senior Citizen's Park
4. Children Play Area
5. Basket Ball Court
6. Badminton Court
7. Indoor Gym
8. Party Hall
9. Association Office
10. Store
11. Indoor Game
12. Swimming Pool with Kids Pool
13. Skating Rink
14. Outdoor Gym
15. STP
16. Transformer Yard

No. of Flats	76 Flats
No. of Floors	G+3 Floors
Parking	Stilt Floor
L ifts	2

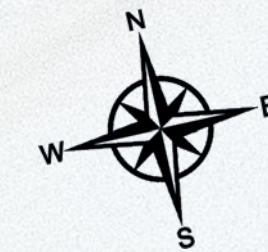


FIRST FLOORPLAN





TYPICAL FLOORPLAN





FLOOR PLAN AND ISOMETRIC VIEW



Flat No	10,16
Ground Floor	10,16
Typical Floor	1,3,10,16
Type	3 BHK
Facing	North
Carpet Area	1165 Sft
SBA	1565 Sft

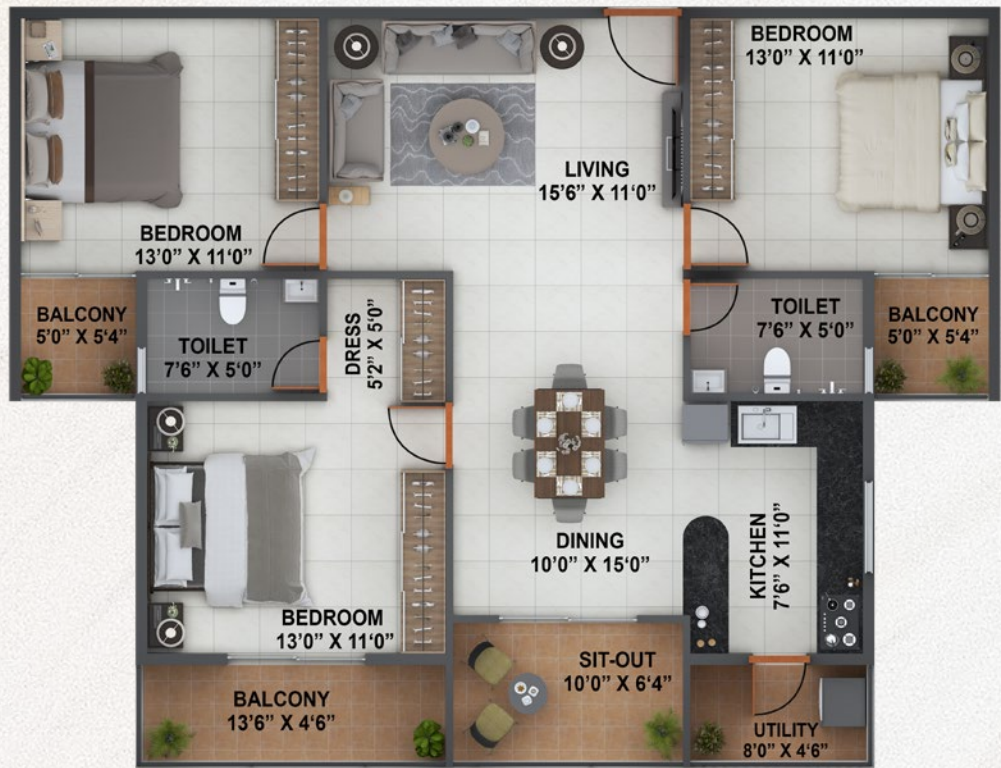


Flat No	4,18
Ground Floor	4,18
Typical Floor	4,12,18
Type	3 BHK
Facing	North
Carpet Area	1199 Sft
SBA	1622 Sft

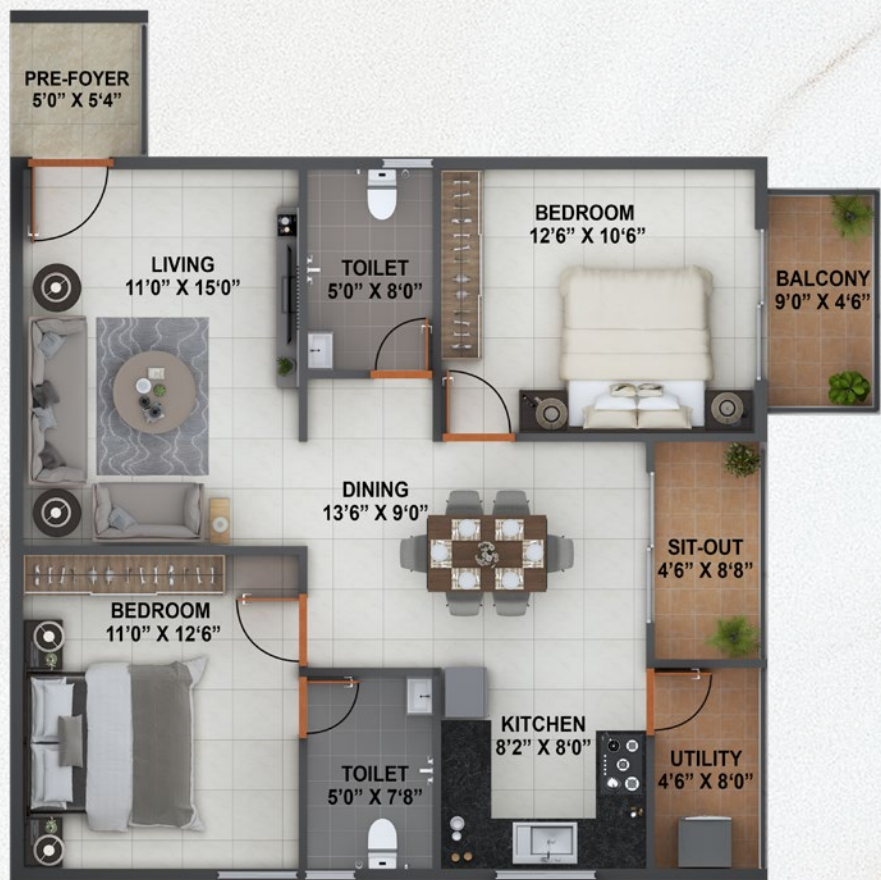


Flat No	2,17
Ground Floor	2,17
Typical Floor	2,11,17
Type	3 BHK
Facing	North
Carpet Area	1195 Sft
SBA	1617 Sft





Flat No	
Ground Floor	5,6,7,8,13,14,19
Typical Floor	5,6,7,8,13,14,19
Type	3 BHK
Facing	North
Carpet Area	1166 Sft
SBA	1558 Sft

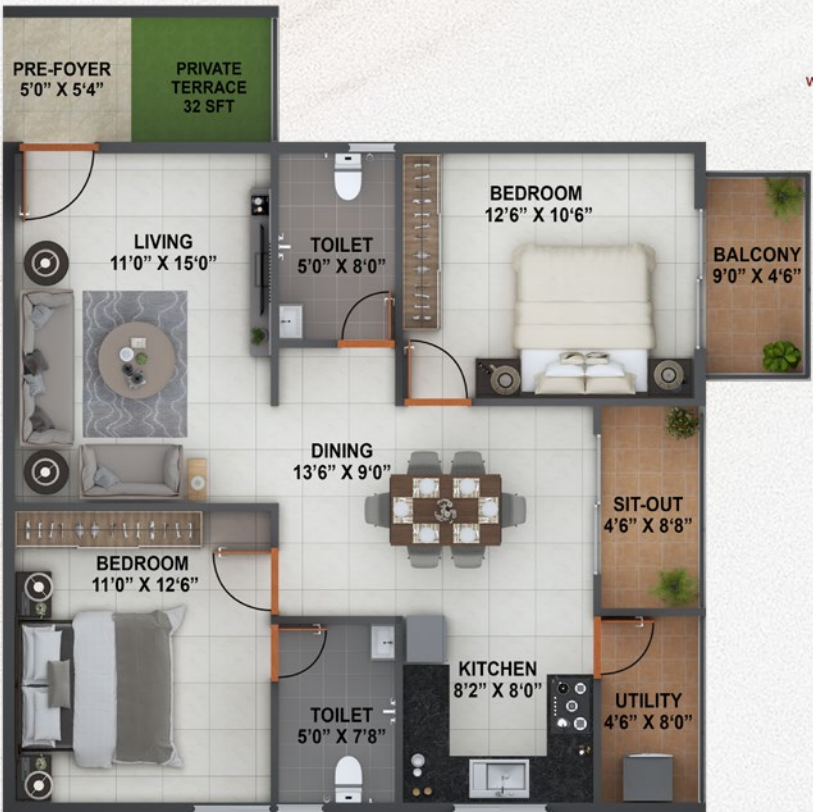


Flat No	
Ground Floor	15
Typical Floor	9,15
Type	2 BHK
Facing	North
Carpet Area	865 Sft
SBA	1170 Sft





Flat No	1,3
Ground Floor	
Type	3 BHK
Facing	North
Carpet Area	1165 Sft
SBA	1565 Sft
Private Terrace	44 Sft



Flat No	9
Ground Floor	
Type	2 BHK
Facing	North
Carpet Area	865 Sft
SBA	1170 Sft
Private Terrace	32 Sft



Flat No	11
Ground Floor	
Type	3 BHK
Facing	North
Carpet Area	1195 Sft
SBA	1617 Sft
Private Terrace	107 Sft



Flat No	12
Ground Floor	
Type	3 BHK
Facing	North
Carpet Area	1199 Sft
SBA	1622 Sft
Private Terrace	69 Sft



NEIGHBORHOOD HIGHLIGHTS

EXPLORE THE VIBRANT NEIGHBORHOOD
SURROUNDING RAAGA APARTMENT ,WITH CONVENIENT
ACCESS TO SCHOOLS, SHOPPING CENTERS, PARKS, AND MORE.



EDUCATIONAL INSTITUTE

ISME International School
Azim Premji University
Oakridge International School
Delhi Public School
Greenwood International School
Manipal International School
Indus International School
Oxford Medical College and Hospital

HOSPITALS

Swastic Hospital
Manipal Hospital
Motherhood Hospital
Narayana Hrudayalaya

SHOPPING

Decathlon
D- Mart
More Supermarket
Food City Hyper Market

TECH PARK

Sable Technology Center
RGA Tech Park
RMZ ECO Space
Infosys
Wipro New Campus

FOOD COURT AND RESTAURANT

KFC
Dominos Pizza Hut
Mani's Dum Biryani

MALLS

Forum Prestige City mall (upcoming)
Total Mall
Confident Oxygen Mall
Nature Walk Mall



AMENITIES

Indulge in the comfort and convenience of life at Raaga Apartments. From a Mini Forest enclave to a range of amenities, there's something for everyone.

- Children Play Area
- Skating Rink
- Badminton Court
- Cricket Practice Pitch
- Landscaped Garden
- Basket ball Court
- Mini Forest
- Outdoor Gym
- Swimming Pool with Kids Pool
- Indoor Gym
- Indoor Games
- Party Hall
- Association Office
- Store
- 24/7 Security with CCTV
- 24/7 Power Backup
- STP





SPECIFICATION

Structure

- R.C.C Framed structure with M-25 grade concrete and Fe 500 grade TMT steel, designed as per relevant BIS codes for Earth Quake Resistance (Seismic zone-II) structurally efficient systems implemented

Walls

- Wall masonry: 6" and 4" solid cement blocks
- Internal walls with 4" Solid concrete blocks

Plastering

- All internal walls and ceiling plastered and painted with emulsion.
- Exterior walls painted with weather proof external paint

Doors

- Main entrance door and Bedroom doors are engineered wood door and frame manufacturing door

Windows

- The three track powder coated Aluminium sliding windows with mosquito mesh and safety grills

Flooring

- Polished vitrified tiles flooring with 3" skirting in drawing, kitchen, dining and bedrooms
- Anti-skid ceramic tiles for balconies and utilities

Toilets

- Anti-skid ceramic tiles flooring and Glazed ceramic tiles dadoing up to 7'0".
- Hindware/ Parryware or equivalent make ISI CP and Sanitary Fittings

Plumbing

- 24hrs Hot and cold water supply lines of CPVC or Equivalent

Electrification

- Concealed copper wiring and modular switches with adequate power points for light, fan, geyser and exhaust fan

Communication

- Telephone and TV points in living room

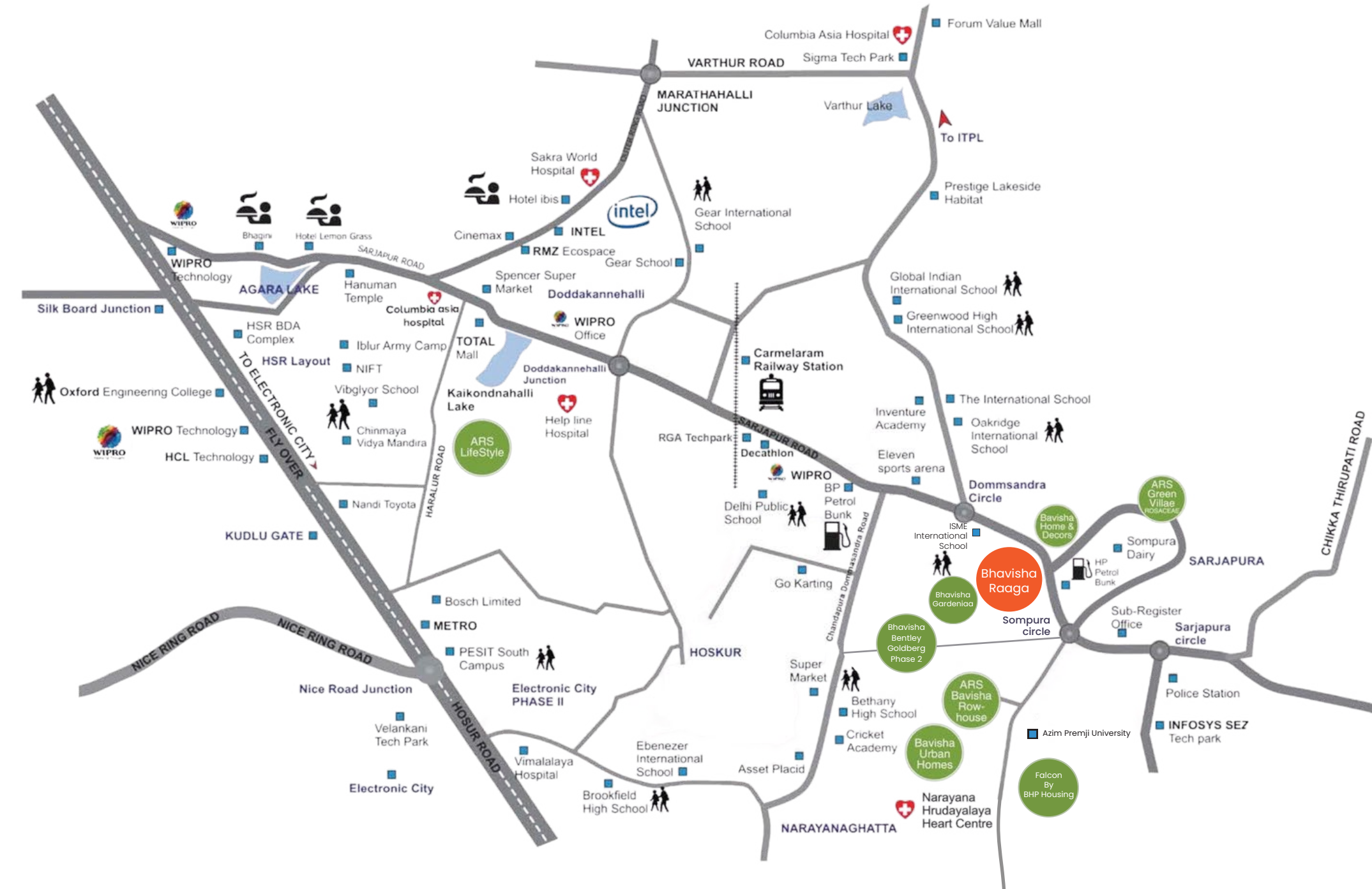
Generator

- Power back-up provided with load controller for each flat Additional power back-up for water pump and common area lightings

Lift

- Lift with a capacity of 10 passengers of reputed make

LOCATION MAP





BHAVISHA PROPERTIES



bavishaproperties@gmail.com



www.bavishahomes.com



#001, 3rd Floor, SyNo.55/1, Yamare,
Sarjapura Road, Bengaluru,
Karnataka – 562125